

The experimental study of γ -ray decay patterns using DANCE

Presented at:

*Compound Nuclear Reactions and Related Topics
October 22-26, 2007 Yosemite National Park, Fish Camp, CA*

UCRL-PRES-235745

Undraa Agvaanluvsan

*N-Division, Physical Sciences Directorate
Lawrence Livermore National Laboratory*

*This work is performed under the auspices of the U.S. Department of Energy by
Lawrence Livermore National Laboratory under Contract DE-AC52-07NA27344.*

Compound nuclear reactions – Resonances

Both **Resolved and Unresolved Resonance Regions** (RRR and URR) are important for compound nuclear reactions. In my opinion, RRR is in better shape (computation-wise).

This presentation focuses on the resolved resonances .

They are a challenge because:

1. Theoretically it is not possible to predict the exact locations and magnitudes of resonances, only their fluctuation properties are calculable. R-matrix codes are fit to resonance data.
2. In all media, neutrons slow down. Therefore for fast reactor applications, even though the flux for low energy neutron is low, it is impossible to eliminate neutron moderation, and cross section at resonances can be extremely large.
3. Reliable determination of their spin and parity is crucial for the level density, which in turn is used in nuclear reaction codes.

Therefore, experimental tools are valuable, some of them, indispensable.
e.g., long-flight paths such as ORELA

Overview

- Describe the experimental technique with DANCE
- Emphasize gating on
 - (a) total energy, (b) multiplicity, (c) E_n

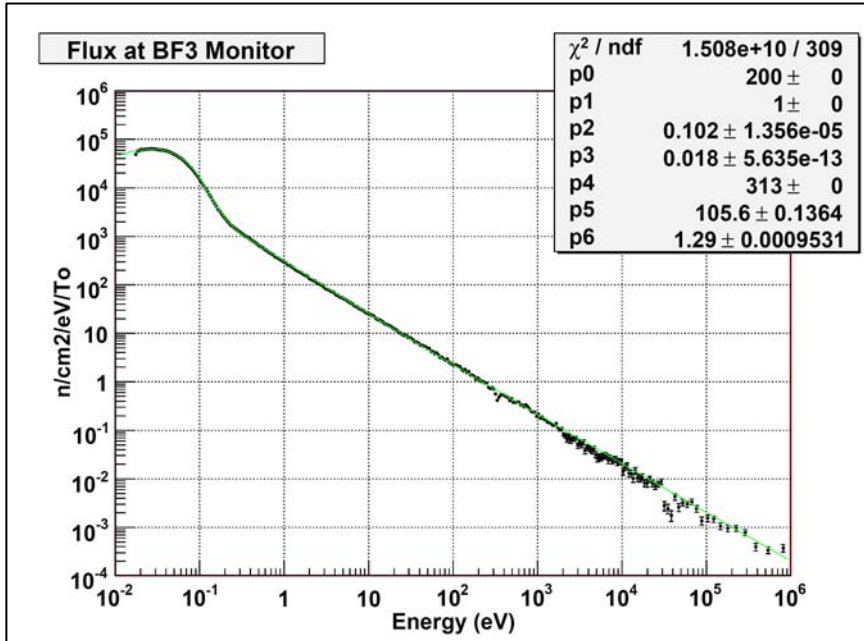
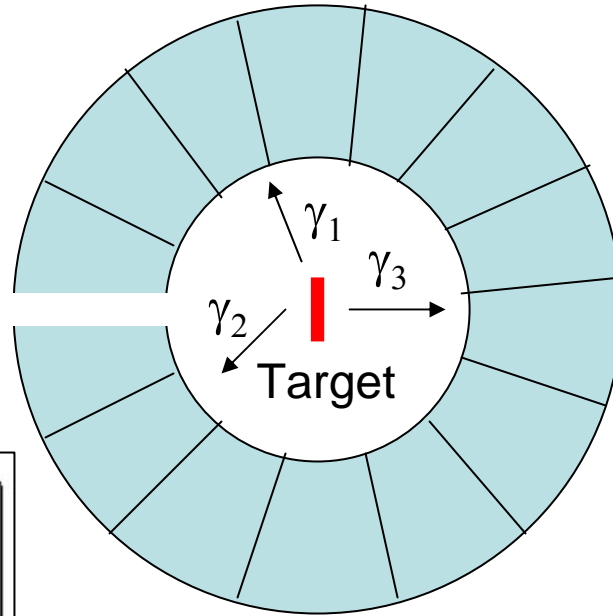
Then I will show data for the following nuclei:

- $^{151}\text{Eu}(n,\gamma)$
- $^{152}\text{Gd}(n,\gamma)$
- $^{235}\text{U}(n,\gamma)$ – in most detail
- $^{241}\text{Am}(n,\gamma)$

DANCE – Experimental technique

The neutron energy is determined by the time-of-flight technique (20m)

Intense white neutron beam

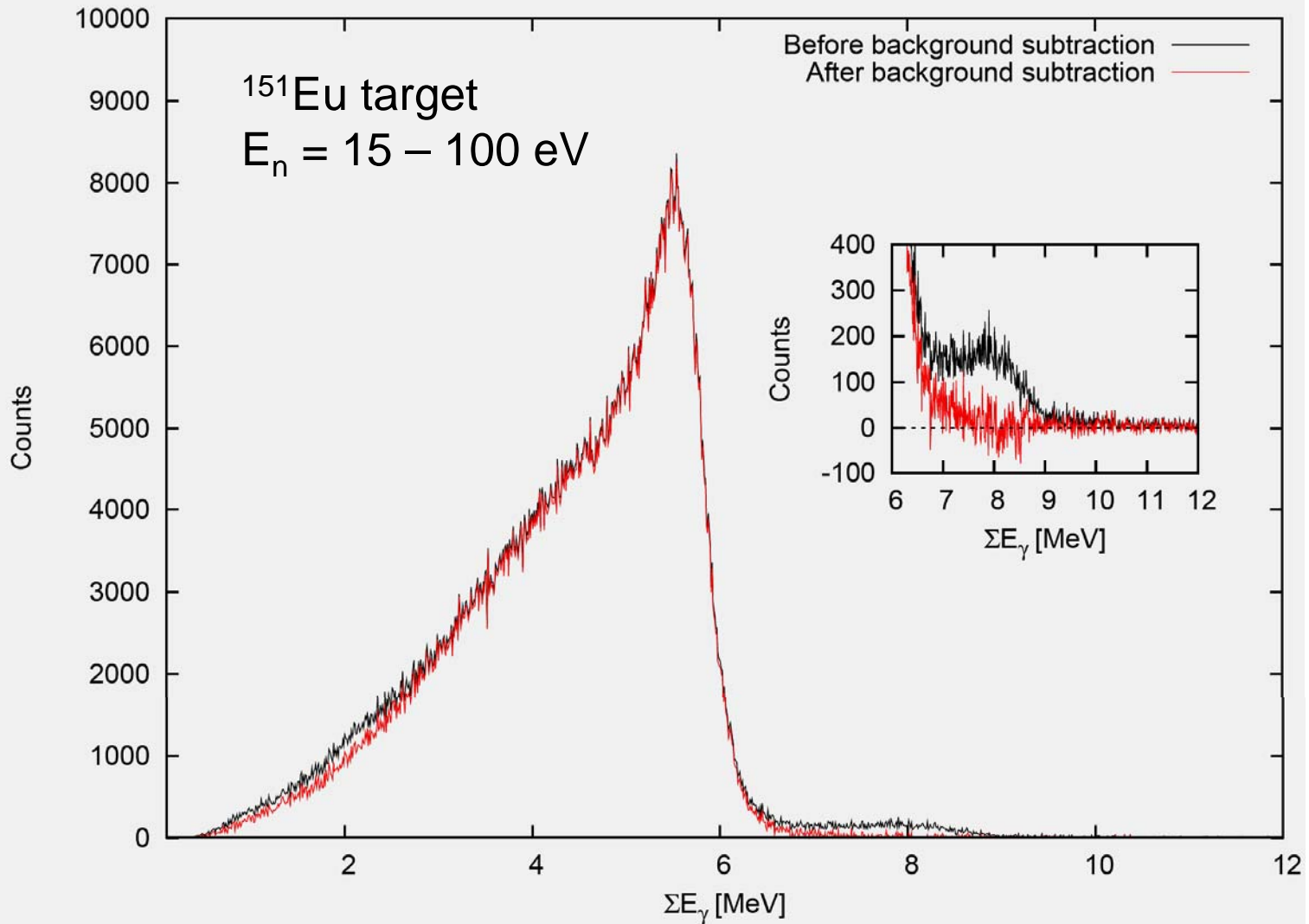


The DANCE array consists of 159 BaF₂ detectors and a ²LiH sphere inside the array helps eliminate the neutron background.

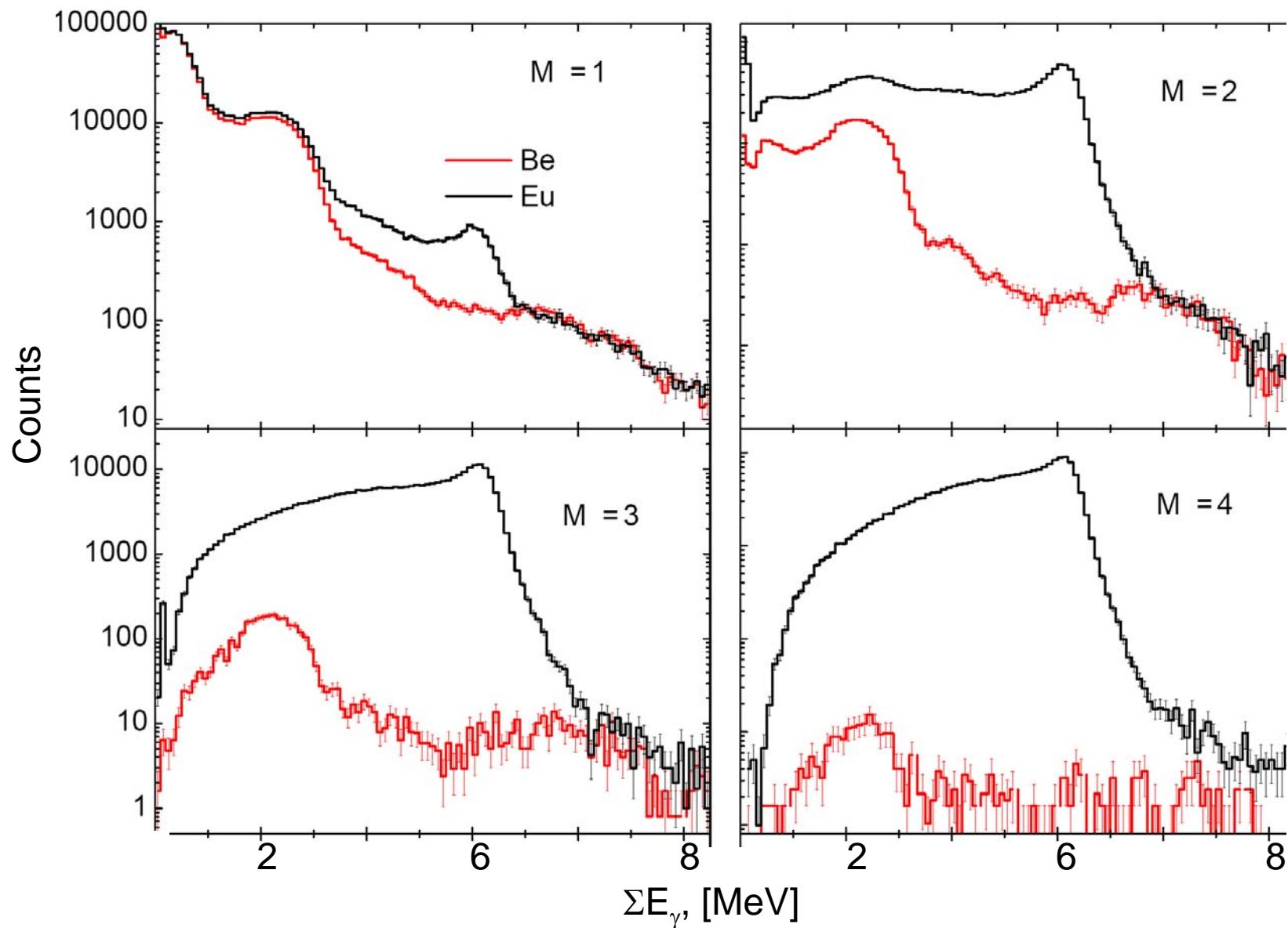
Detector for Advanced Neutron Capture Experiments (DANCE)

1. A calorimeter which enables nearly total energy collection
2. Highly segmented therefore makes possible to identify the number of γ -rays in the cascade (**multiplicity – M**)
3. For each multiplicity, energy information can be obtained

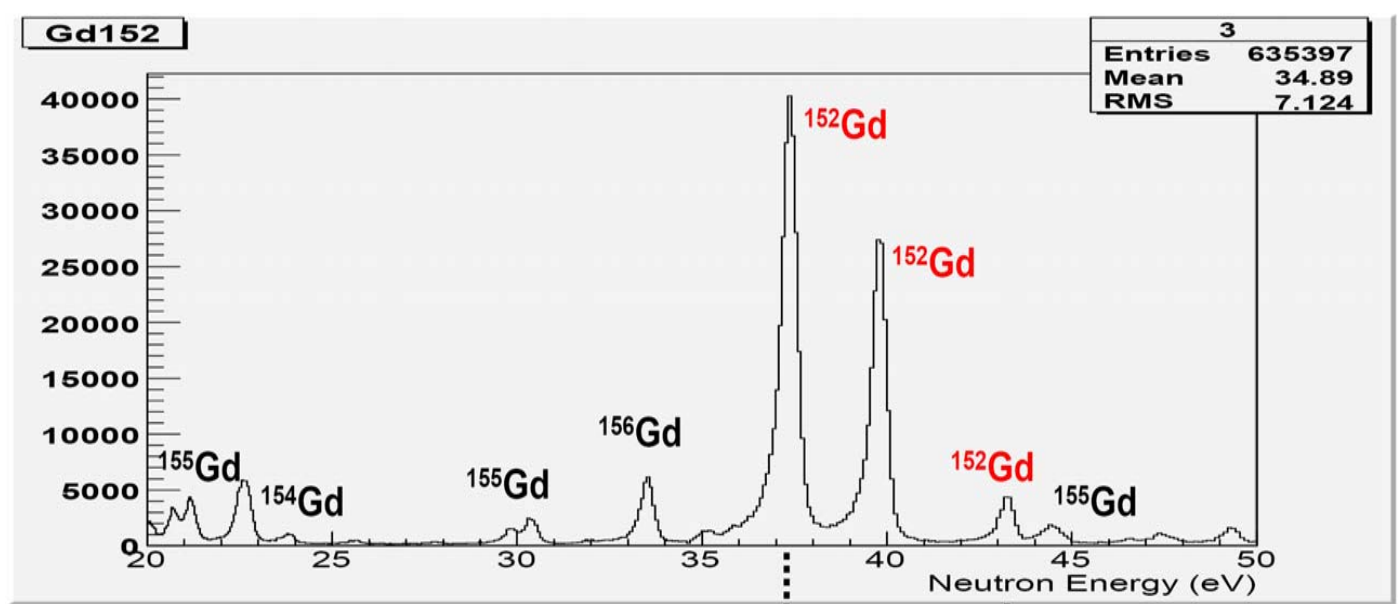
The total energy spectrum is obtained
as a function of E_n



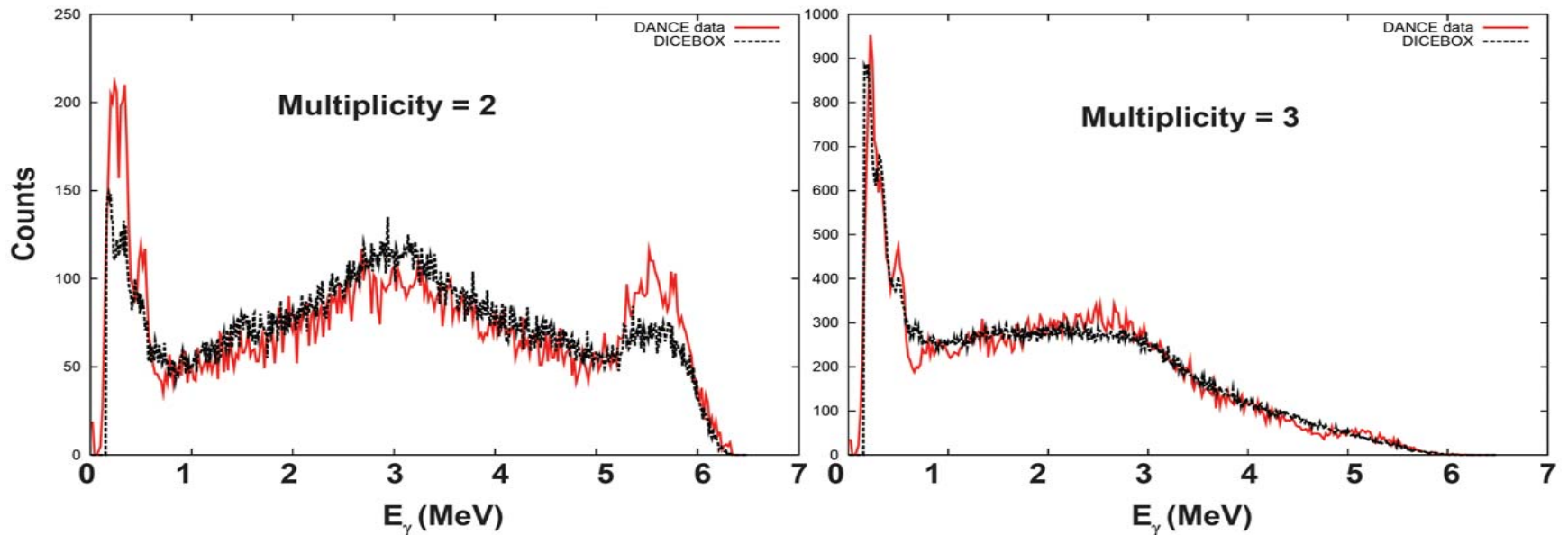
High segmentation -- each M can be separated



Gates set on the total energy, the neutron energy spectrum is obtained

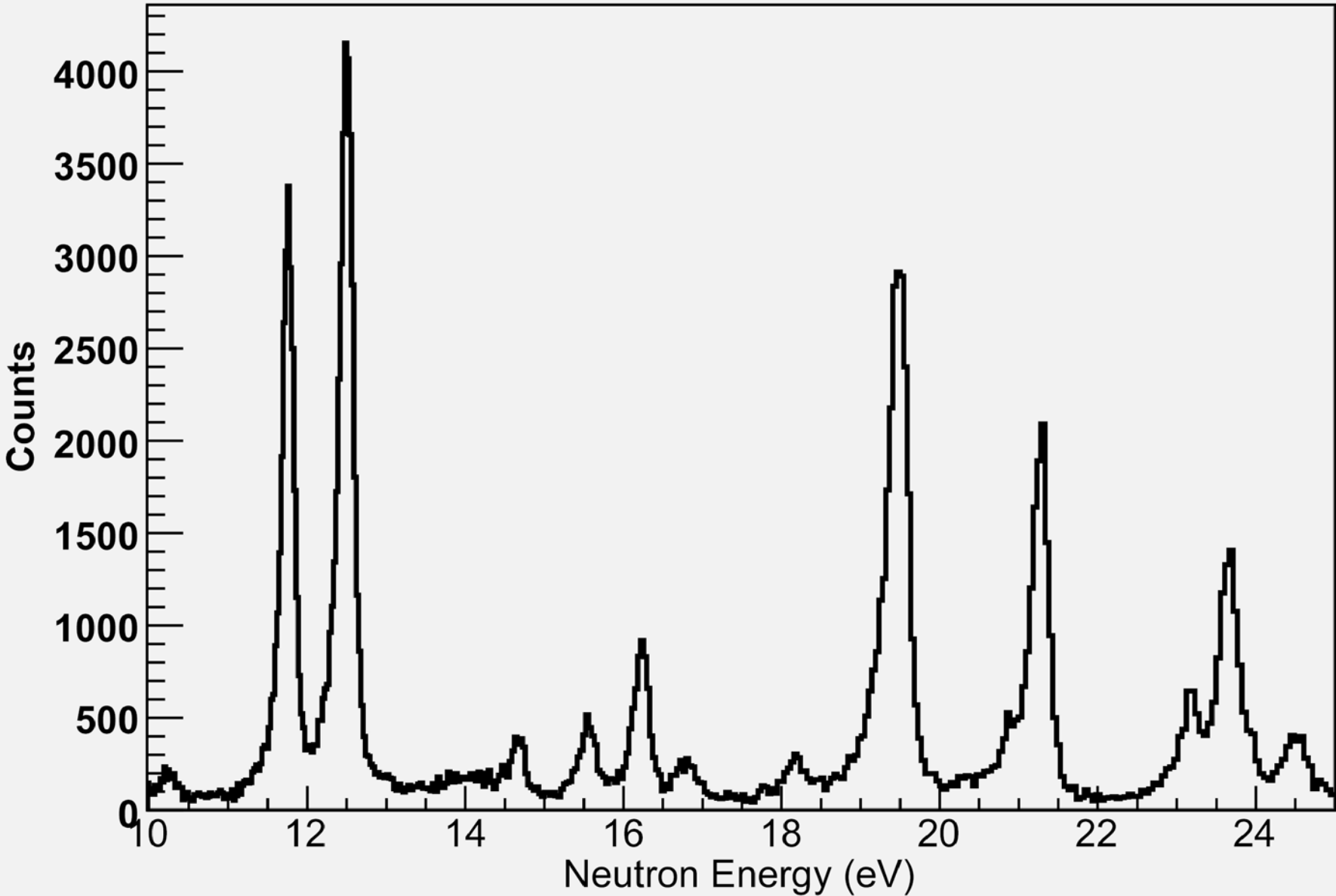


Neutron energy gate is set around well-separated s-wave ^{152}Gd resonance at $E_n = 39.3$ eV.

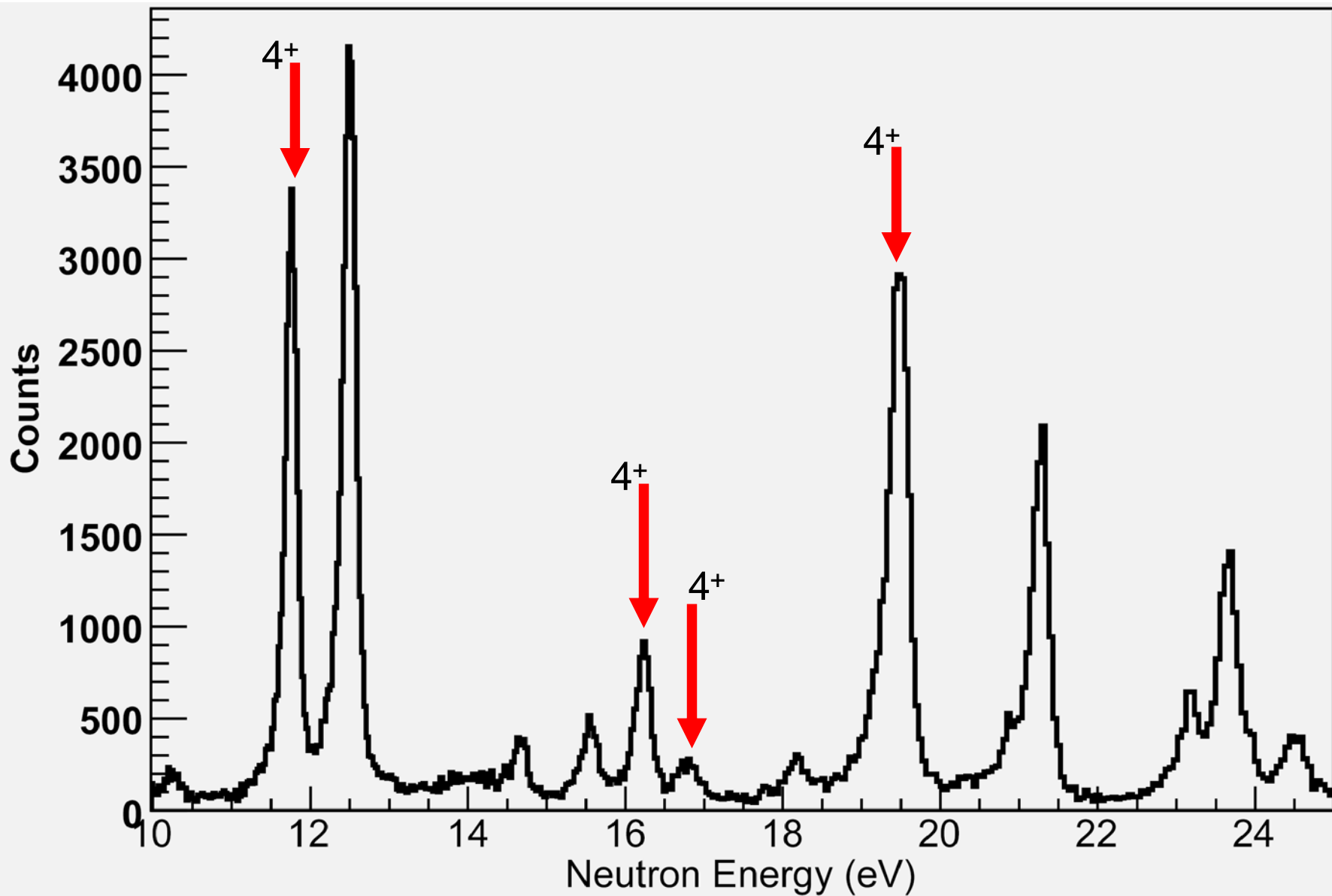


Courtesy of D. Dashdorj, NCSU

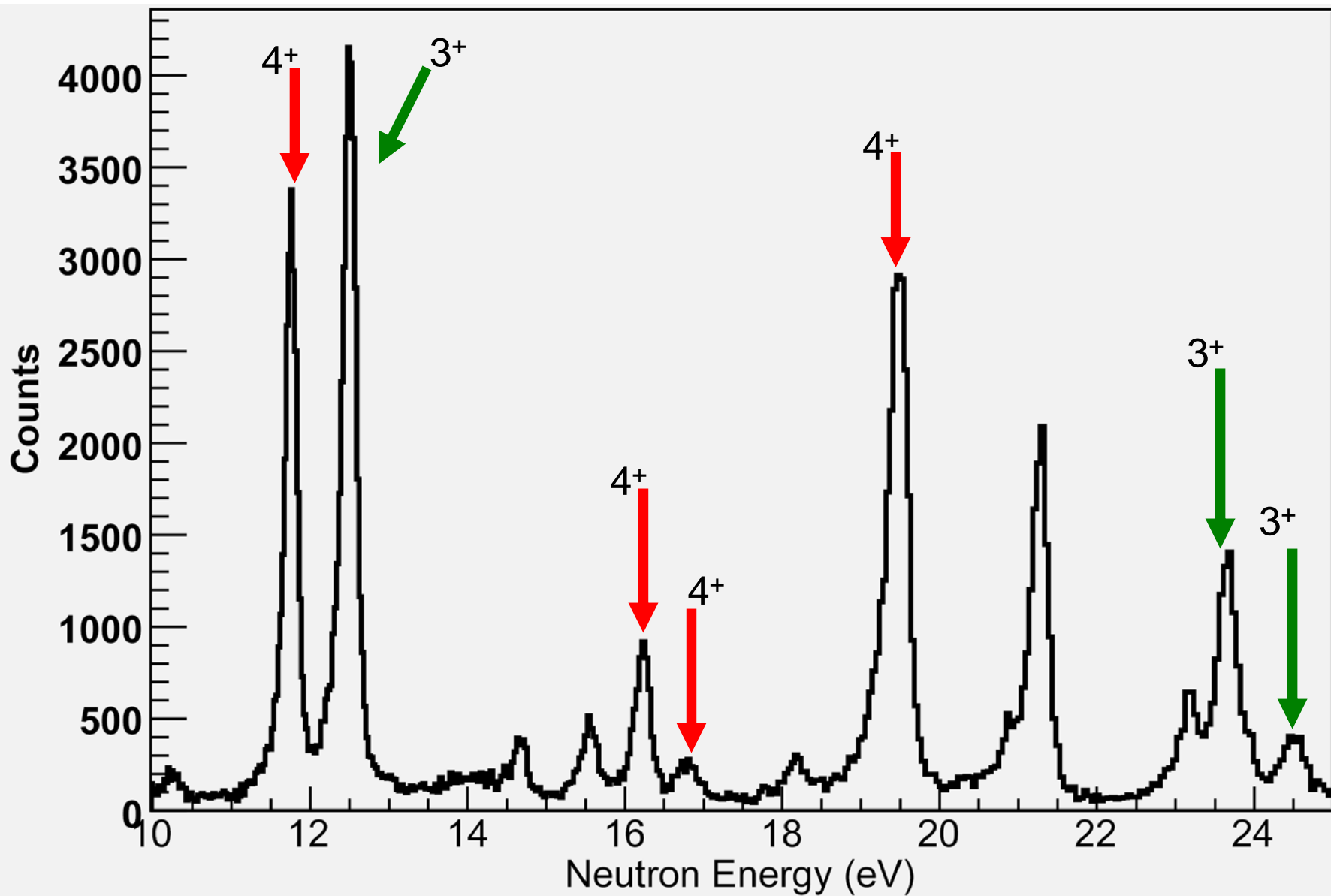
Neutron resonances of ^{235}U



Neutron resonances of ^{235}U



Neutron resonances of ^{235}U

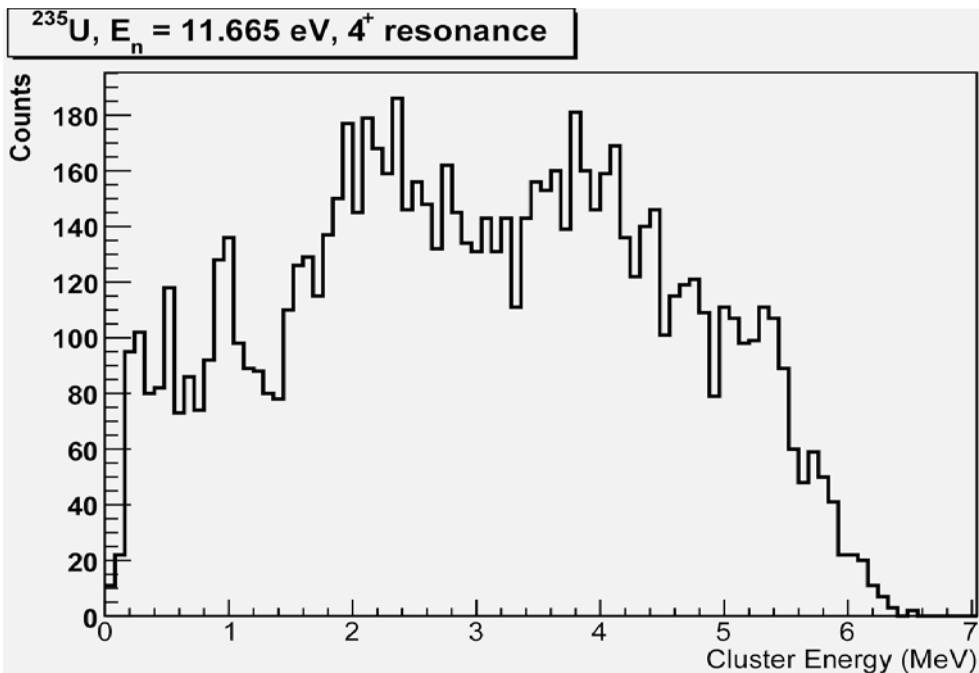
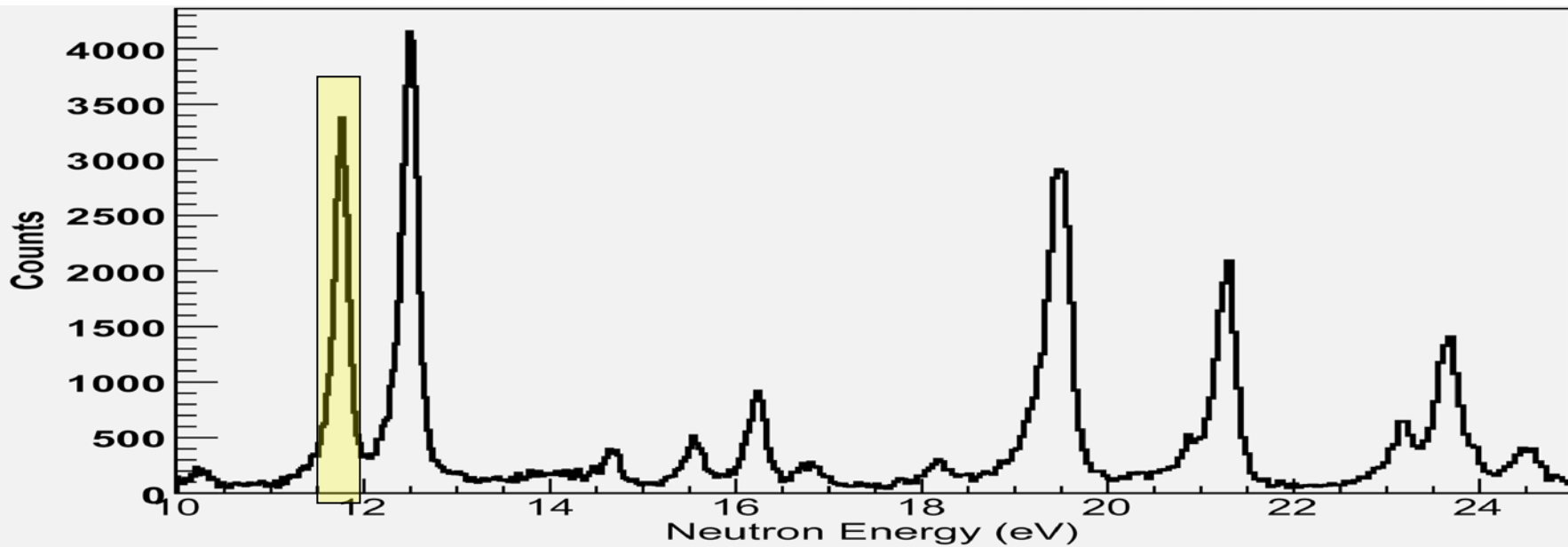


The application to reaction codes

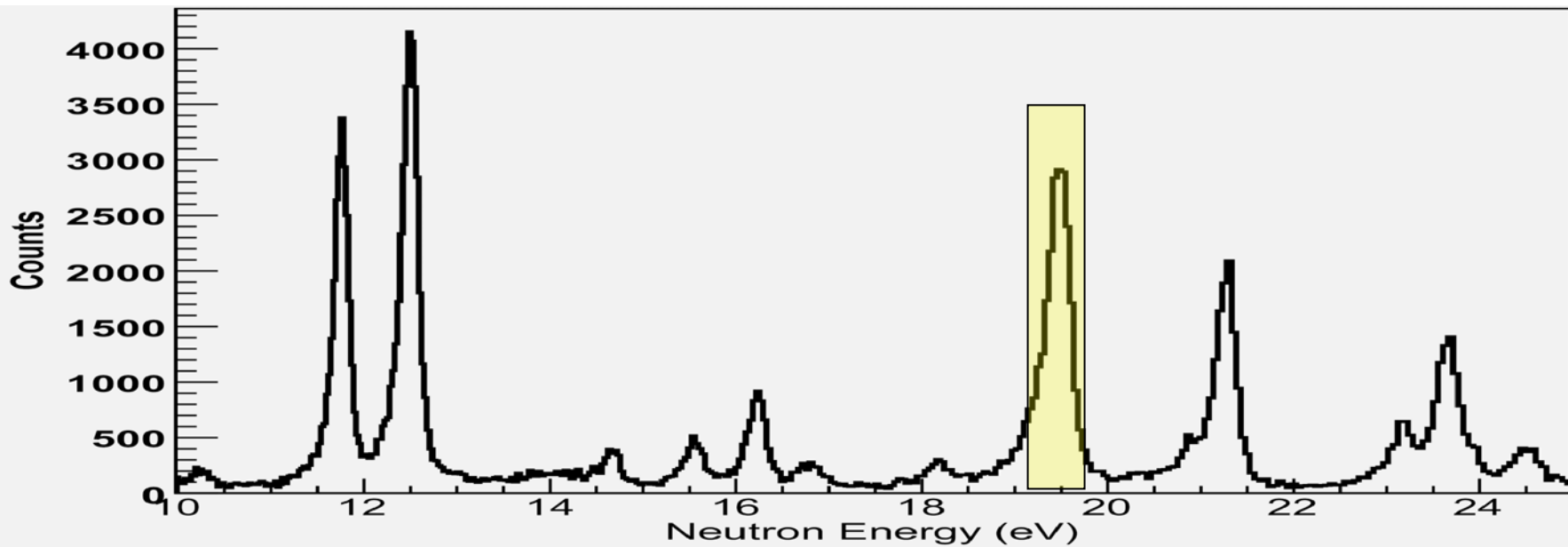
The s-wave resonance spacing D is needed for the calculation of the total level density (or for an “ a ” parameter) at the neutron binding energy. Therefore D needs to be accurate for the correct calculation of reaction rates.

For ^{235}U , the target spin is $7/2^+$.

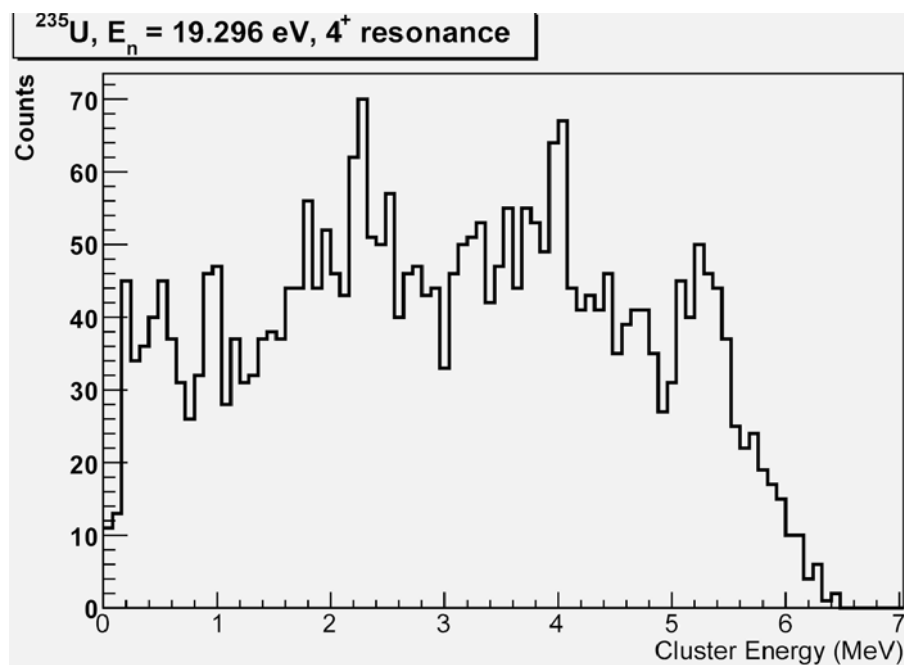
The s-wave resonances have spins 3^+ or 4^+ .

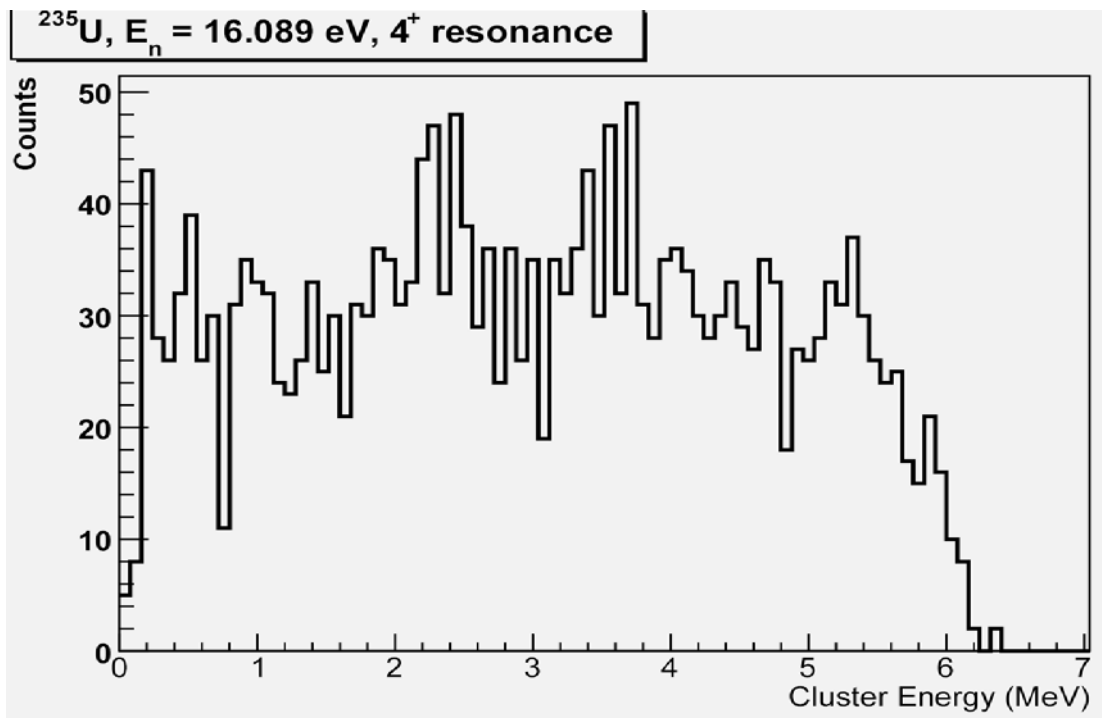
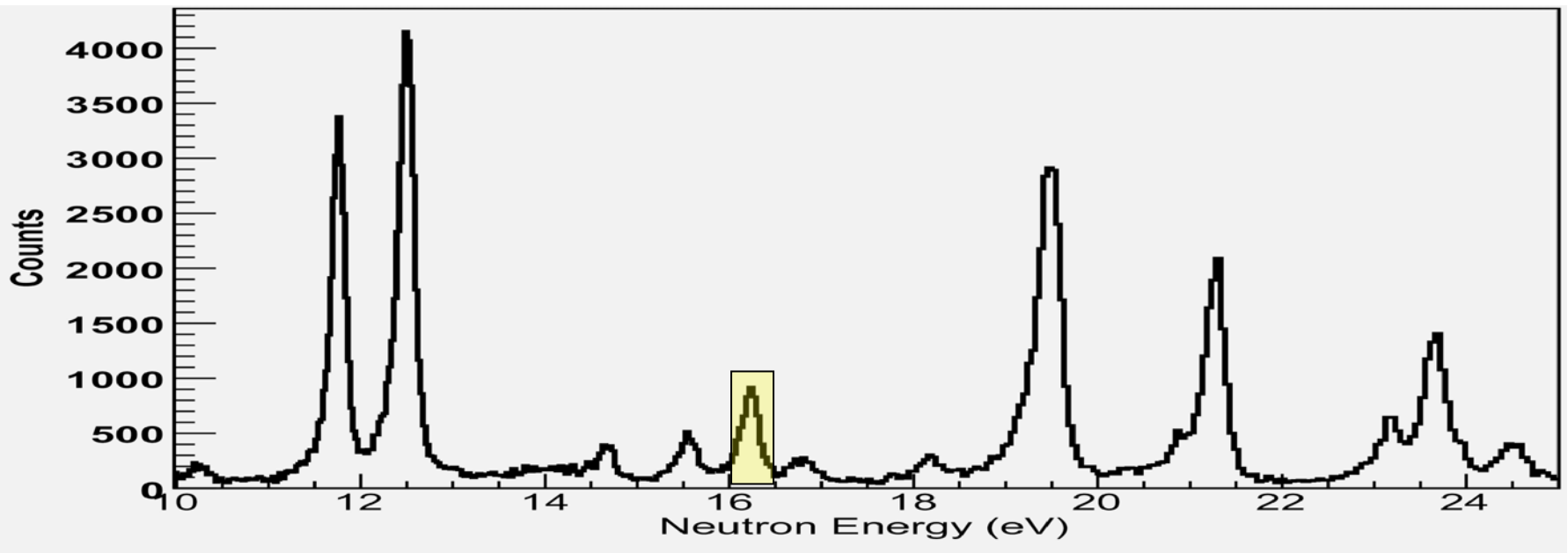


4^+

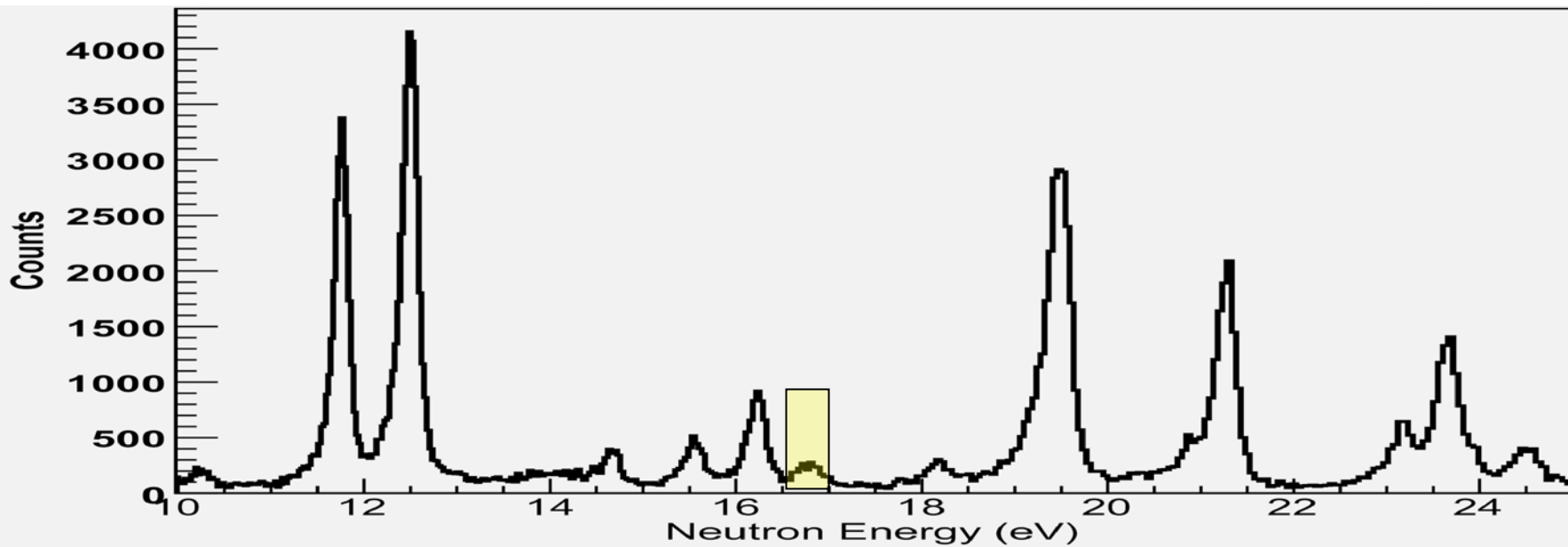


4^+

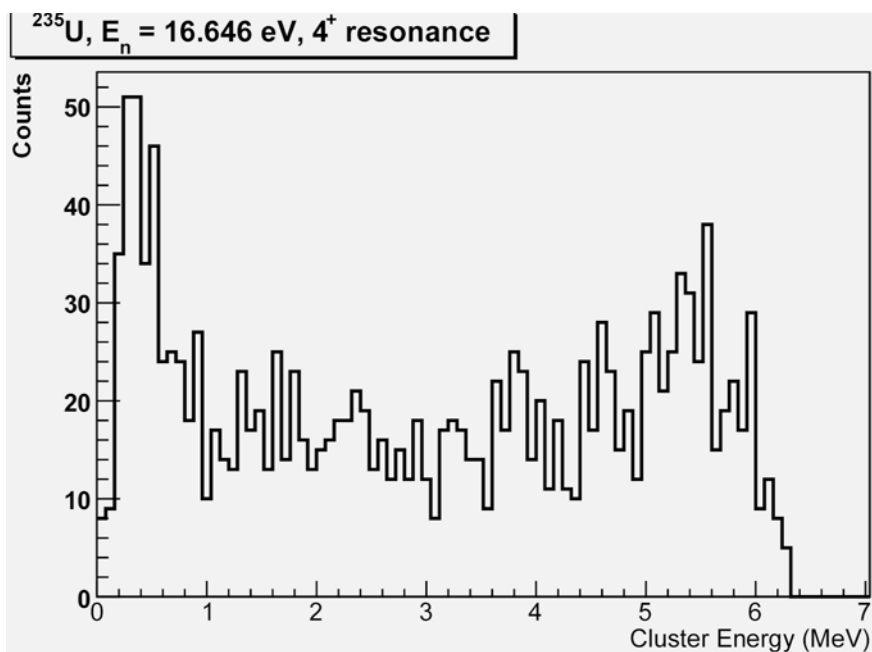




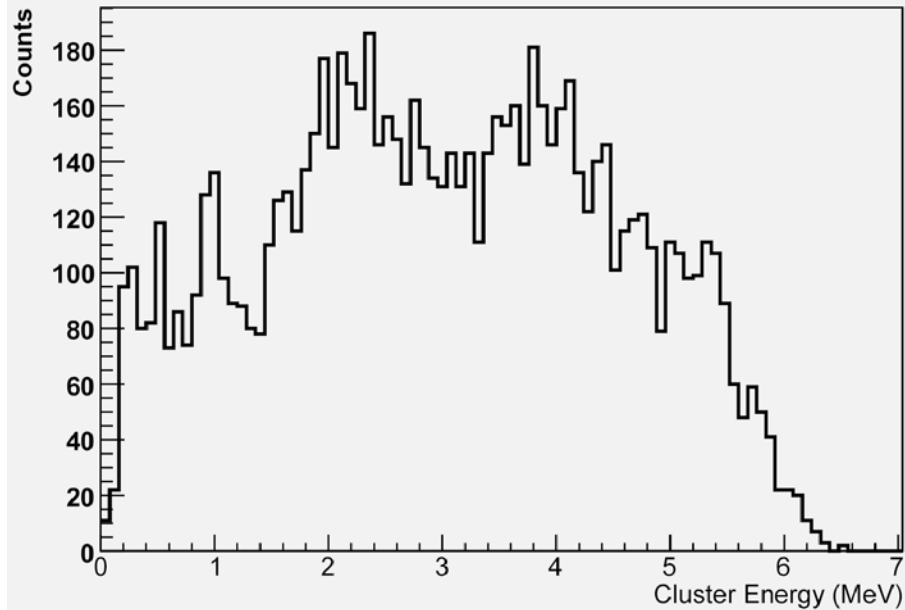
4^+



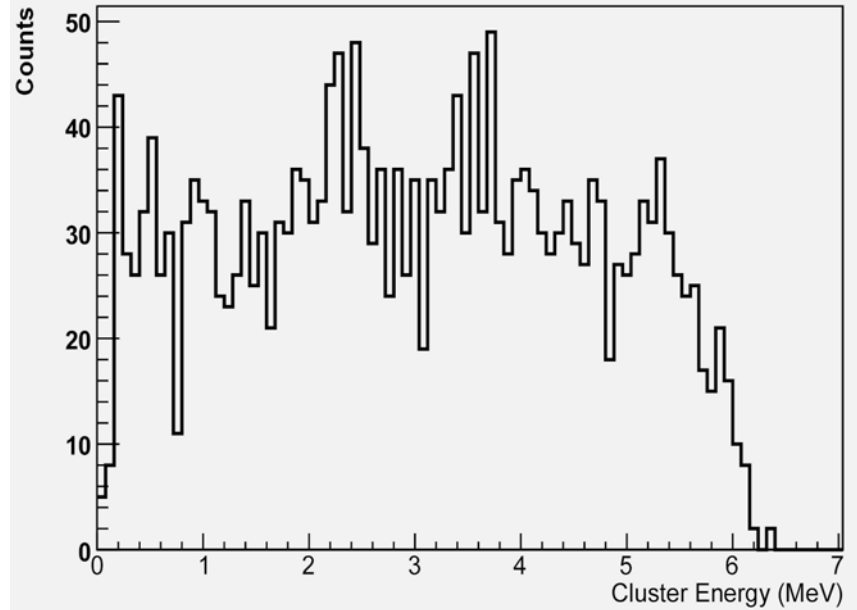
4^+



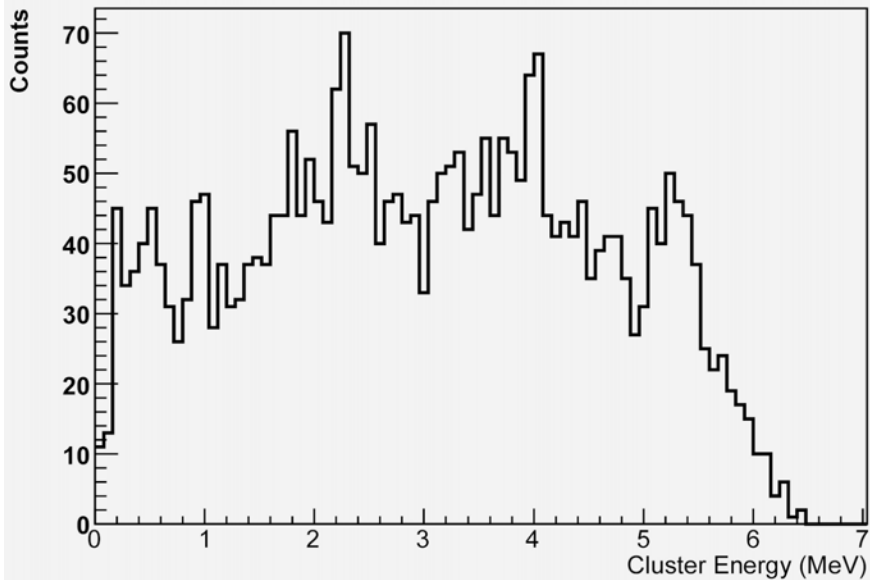
^{235}U , $E_n = 11.665 \text{ eV}$, 4^+ resonance



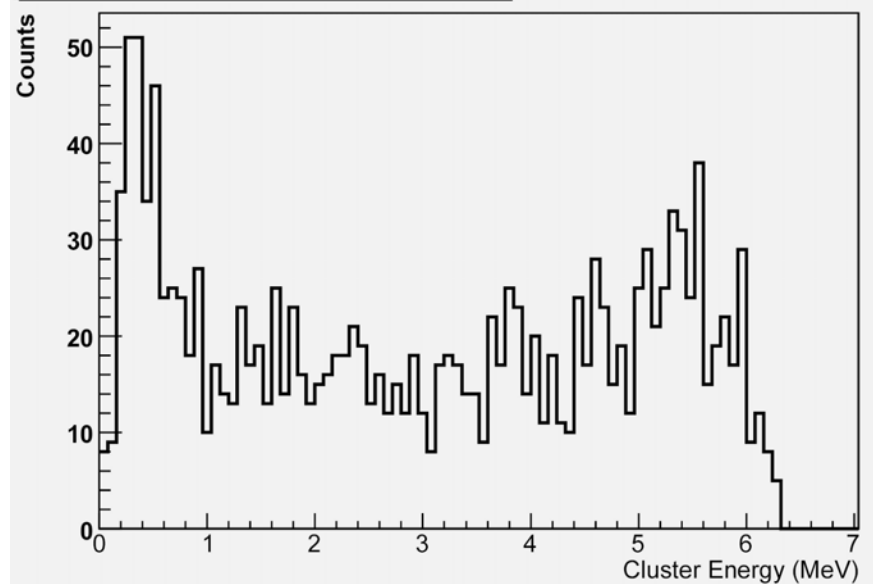
^{235}U , $E_n = 16.089 \text{ eV}$, 4^+ resonance



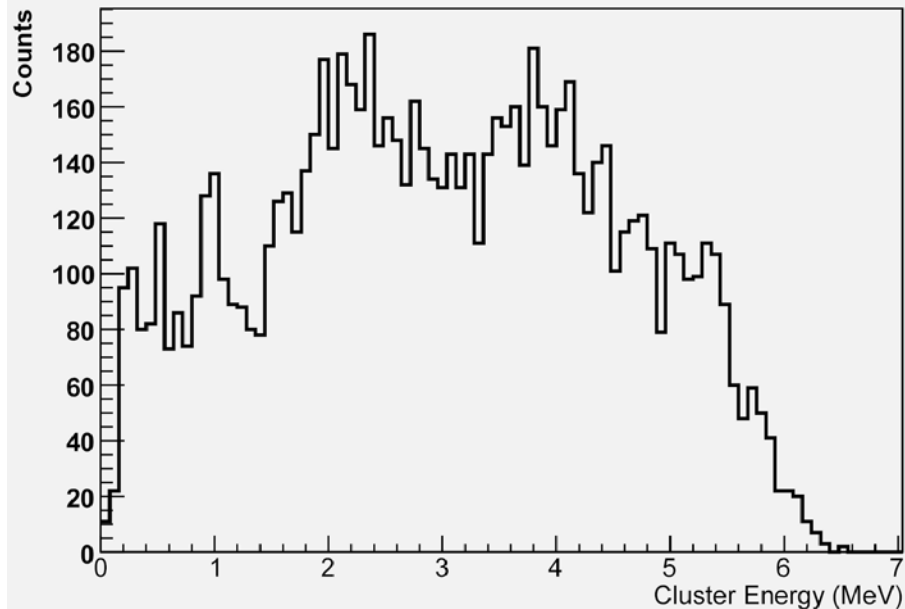
^{235}U , $E_n = 19.296 \text{ eV}$, 4^+ resonance



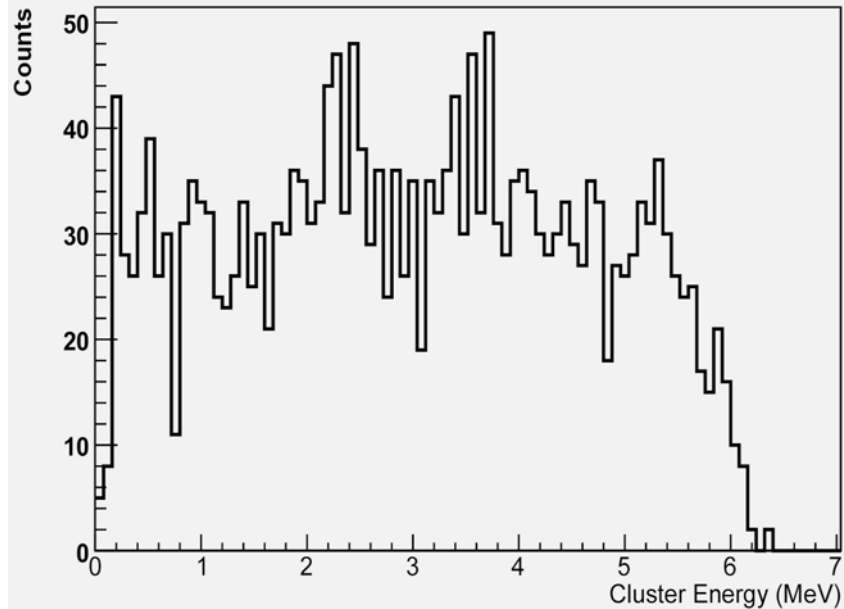
^{235}U , $E_n = 16.646 \text{ eV}$, 4^+ resonance



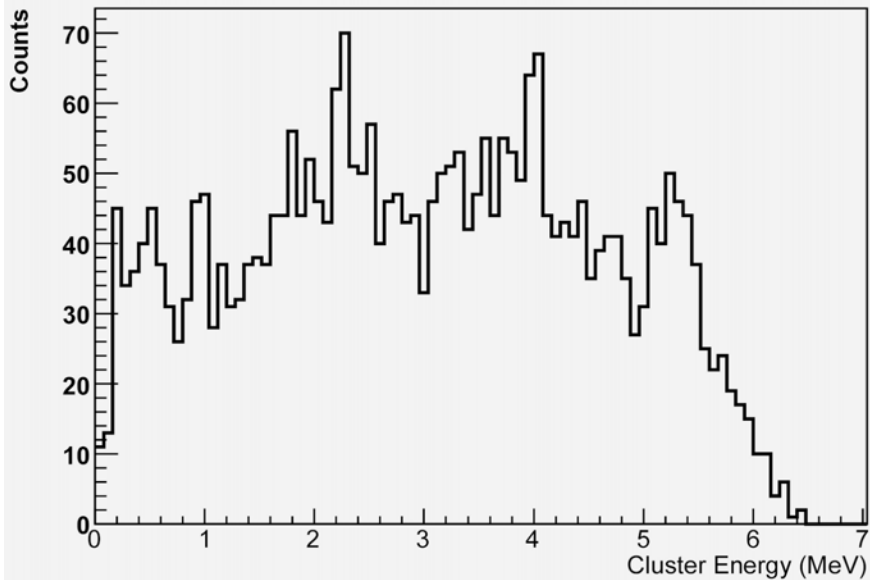
^{235}U , $E_n = 11.665 \text{ eV}$, 4^+ resonance



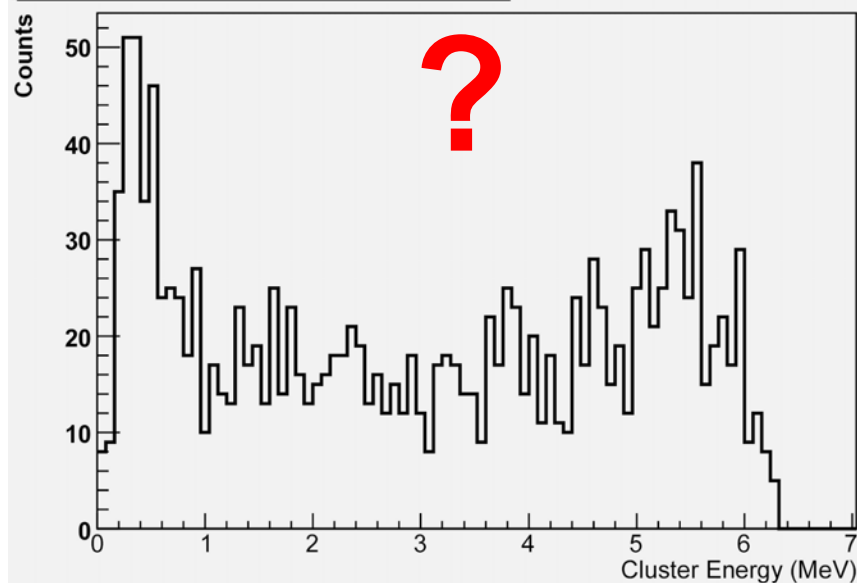
^{235}U , $E_n = 16.089 \text{ eV}$, 4^+ resonance

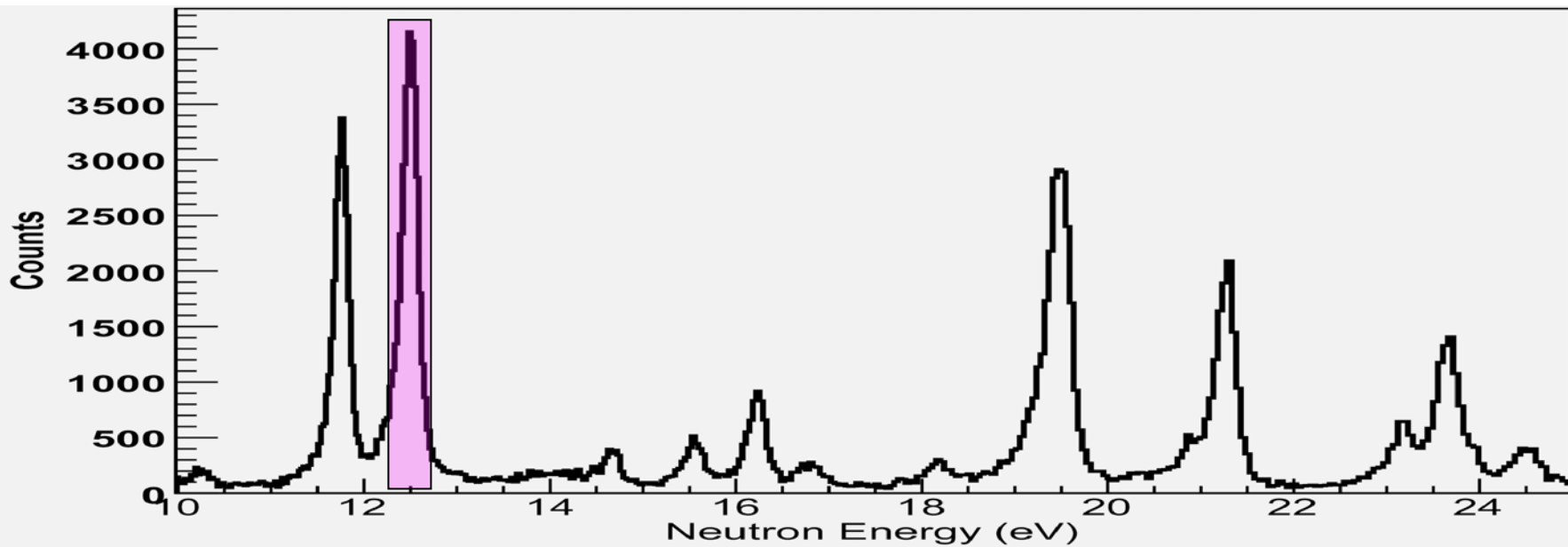


^{235}U , $E_n = 19.296 \text{ eV}$, 4^+ resonance

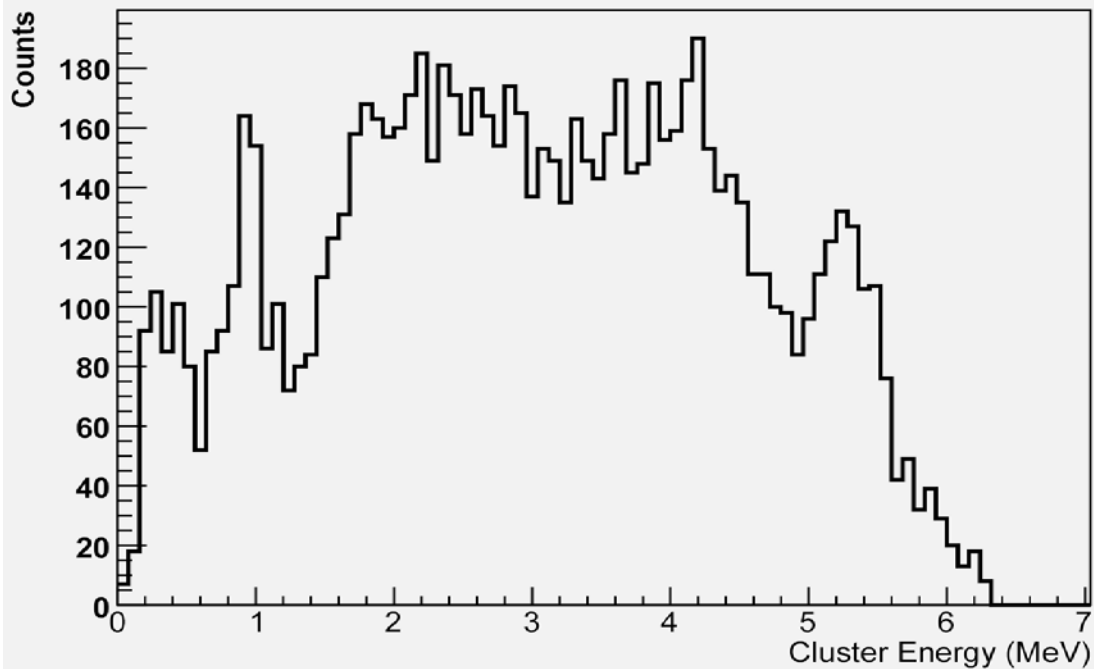


^{235}U , $E_n = 16.646 \text{ eV}$, 4^+ resonance

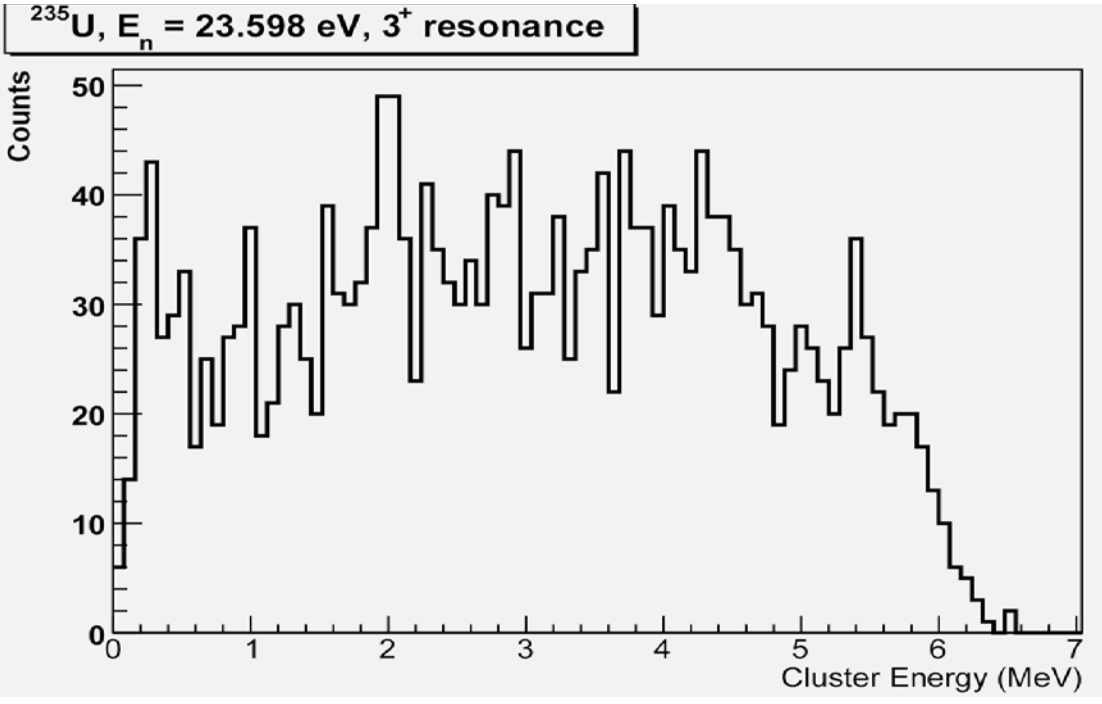
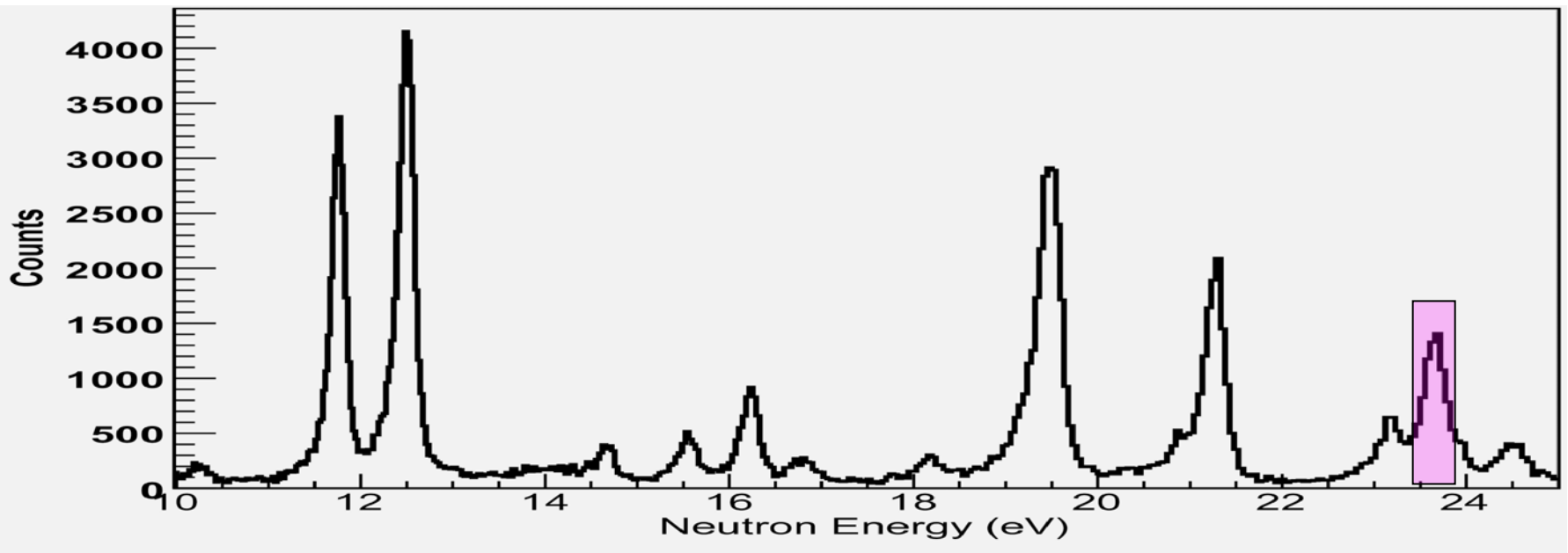




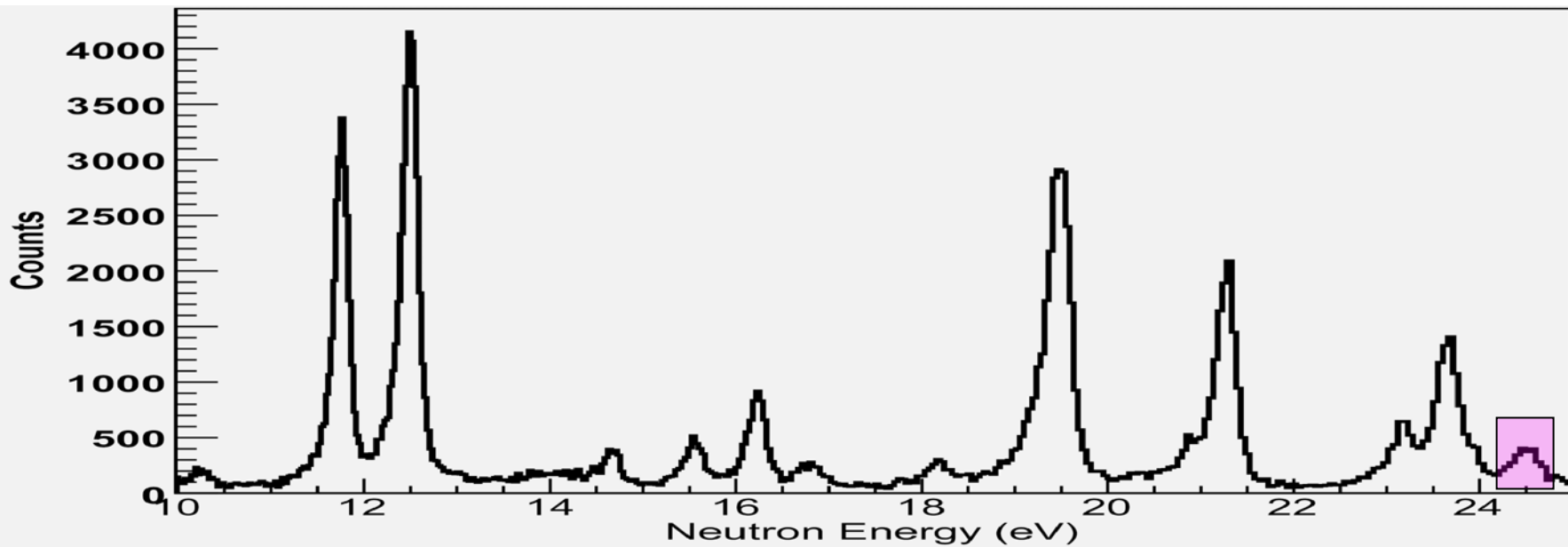
^{235}U , $E_n = 12.390 \text{ eV}$, 3^+ resonance



3^+

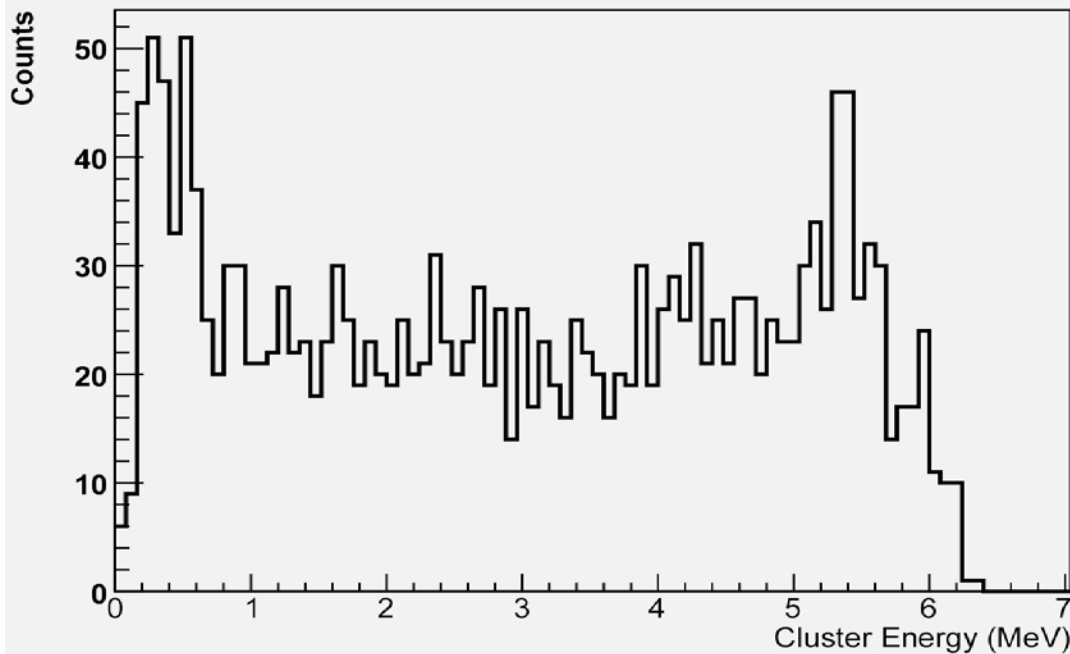


3⁺

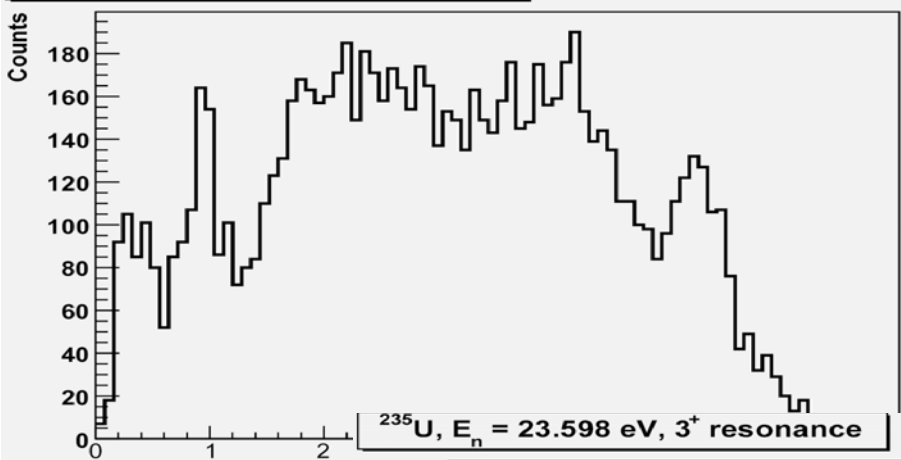


^{235}U , $E_n = 24.238$ eV, 3^+ resonance

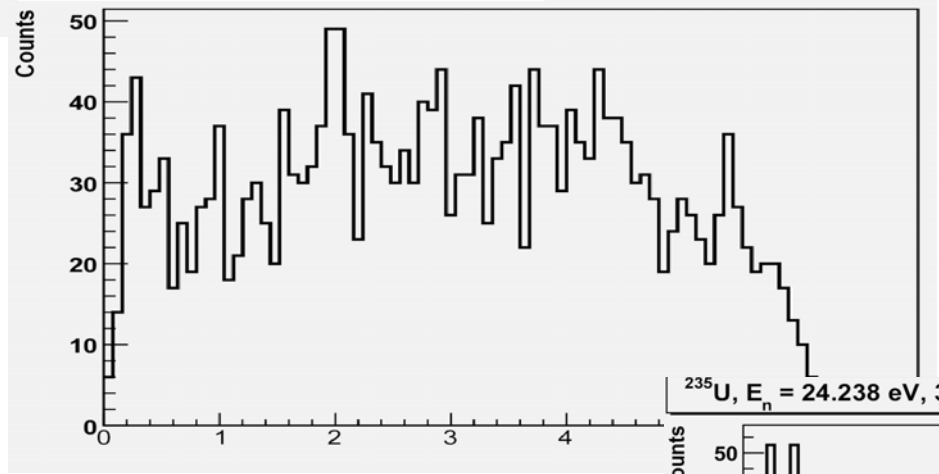
3^+



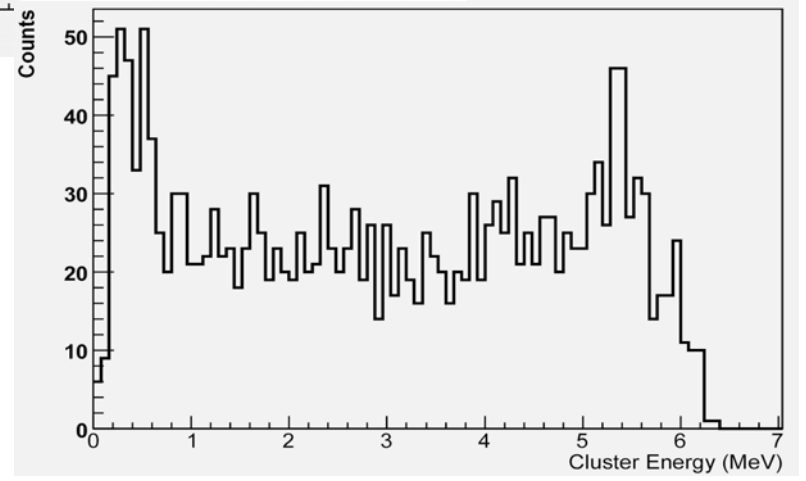
^{235}U , $E_n = 12.390 \text{ eV}$, 3^+ resonance



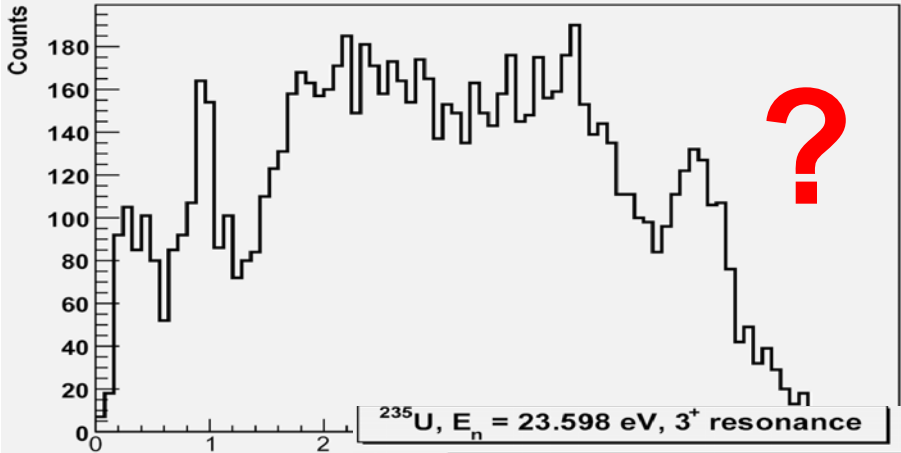
^{235}U , $E_n = 23.598 \text{ eV}$, 3^+ resonance



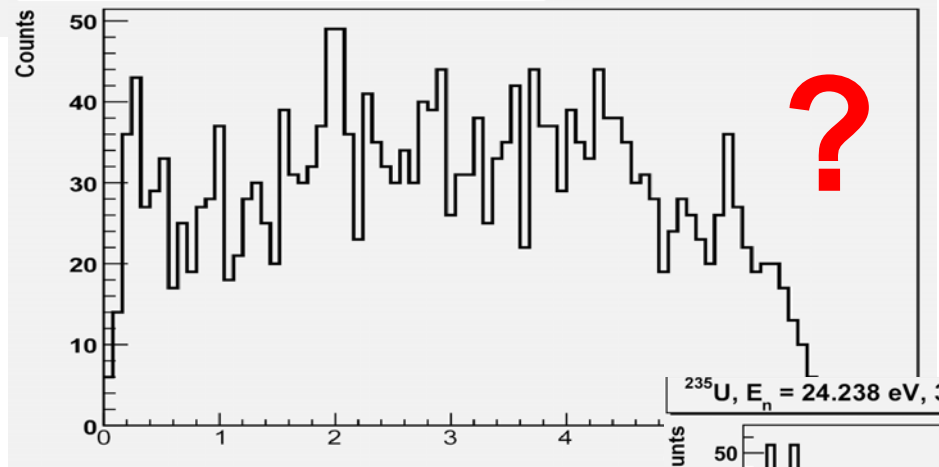
^{235}U , $E_n = 24.238 \text{ eV}$, 3^+ resonance



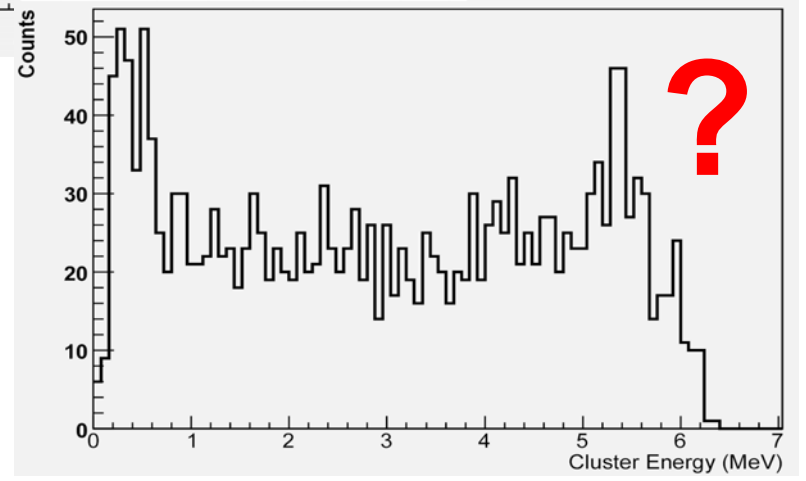
^{235}U , $E_n = 12.390 \text{ eV}$, 3^+ resonance



^{235}U , $E_n = 23.598 \text{ eV}$, 3^+ resonance

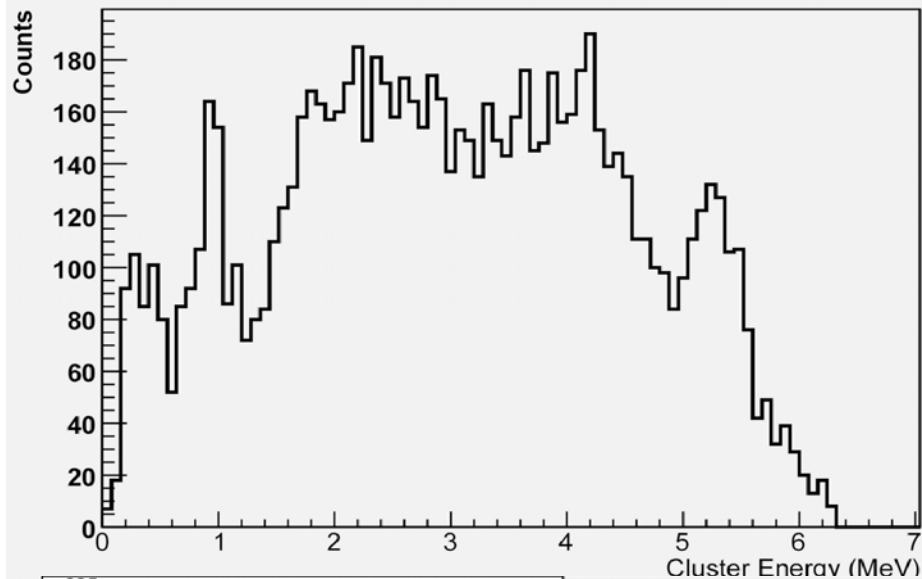


^{235}U , $E_n = 24.238 \text{ eV}$, 3^+ resonance

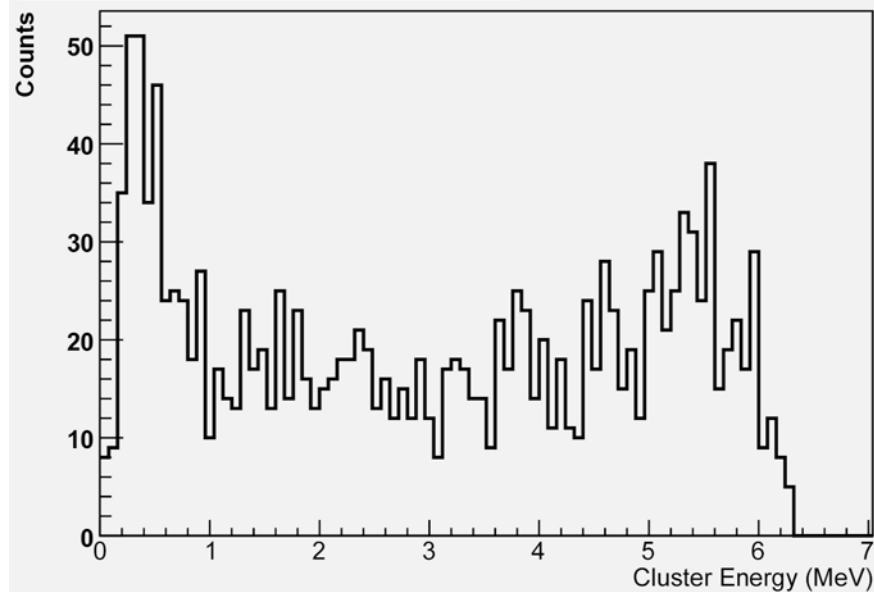


What happens if I rearrange?

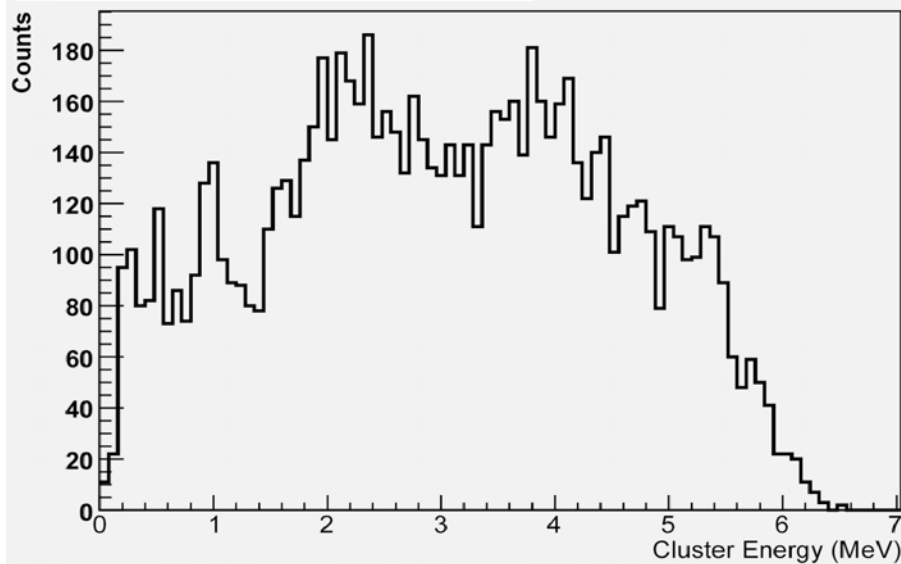
^{235}U , $E_n = 12.390$ eV, 3^+ resonance



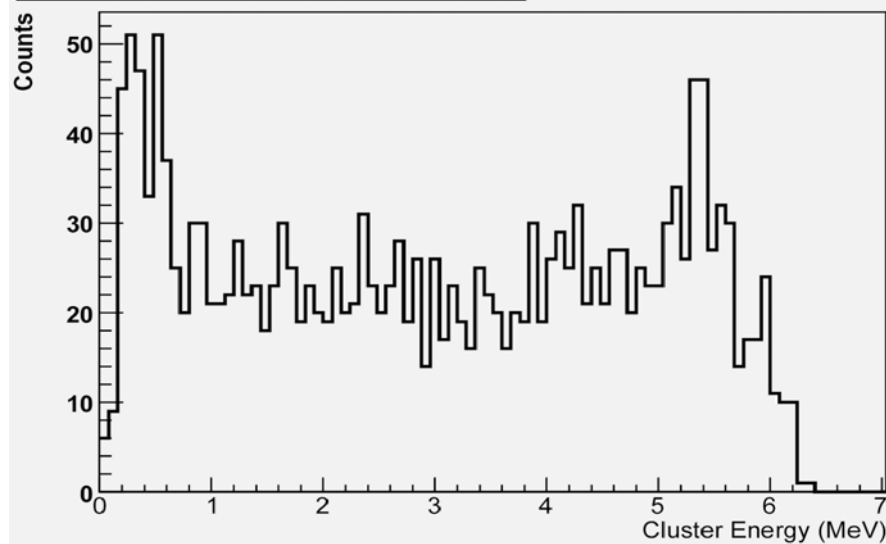
^{235}U , $E_n = 16.646$ eV, 4^+ resonance



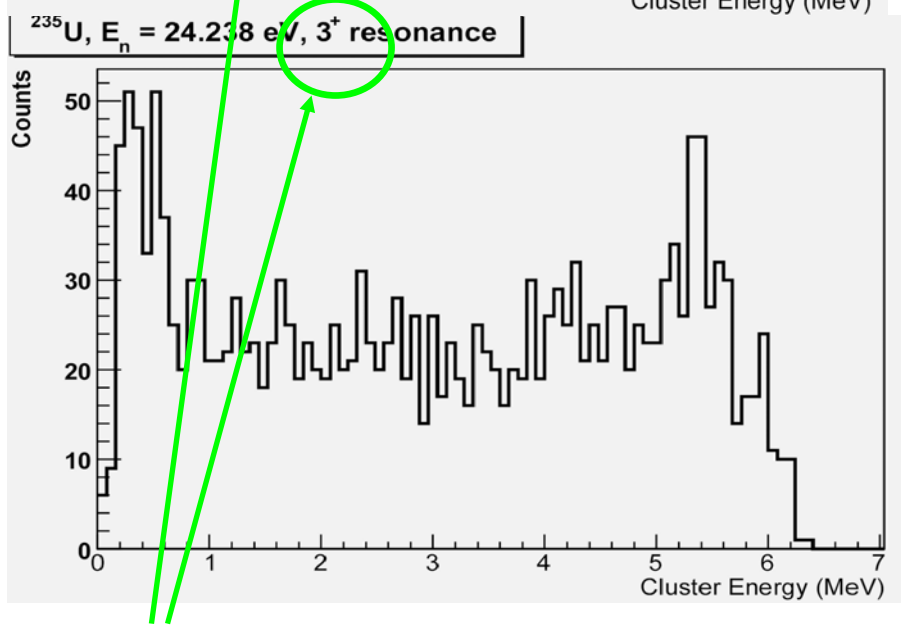
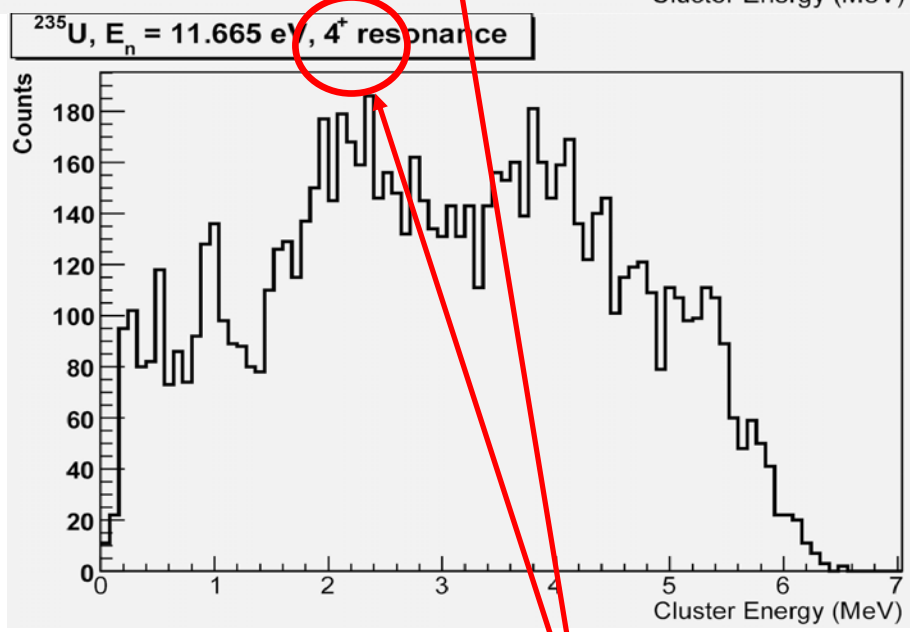
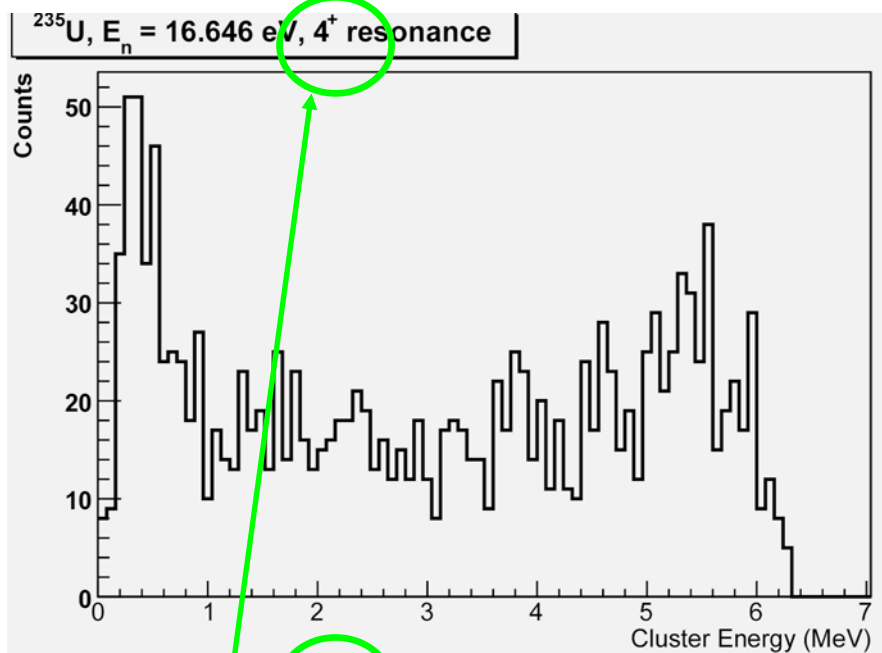
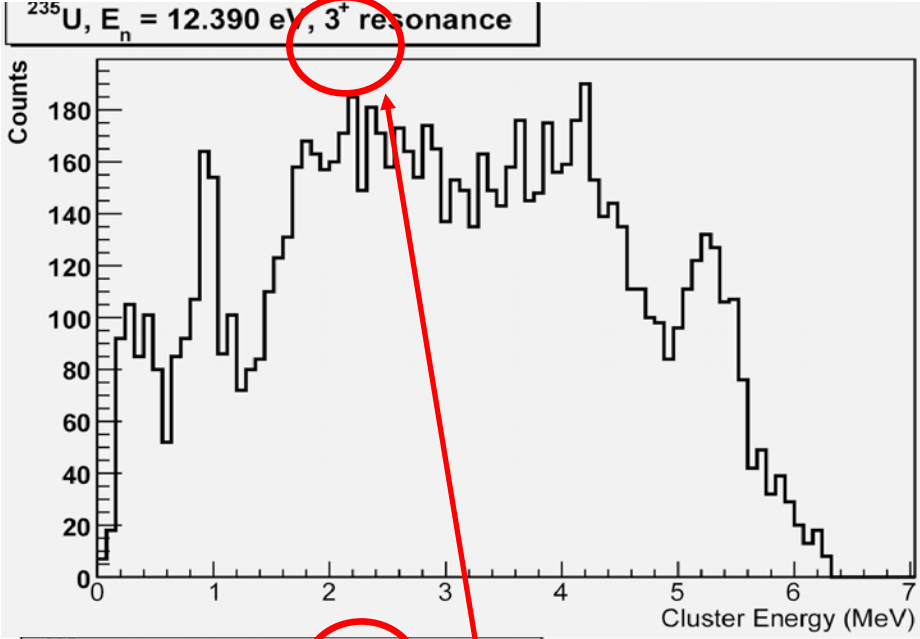
^{235}U , $E_n = 11.665$ eV, 4^+ resonance



^{235}U , $E_n = 24.238$ eV, 3^+ resonance



They can be sorted into two distinct shapes.



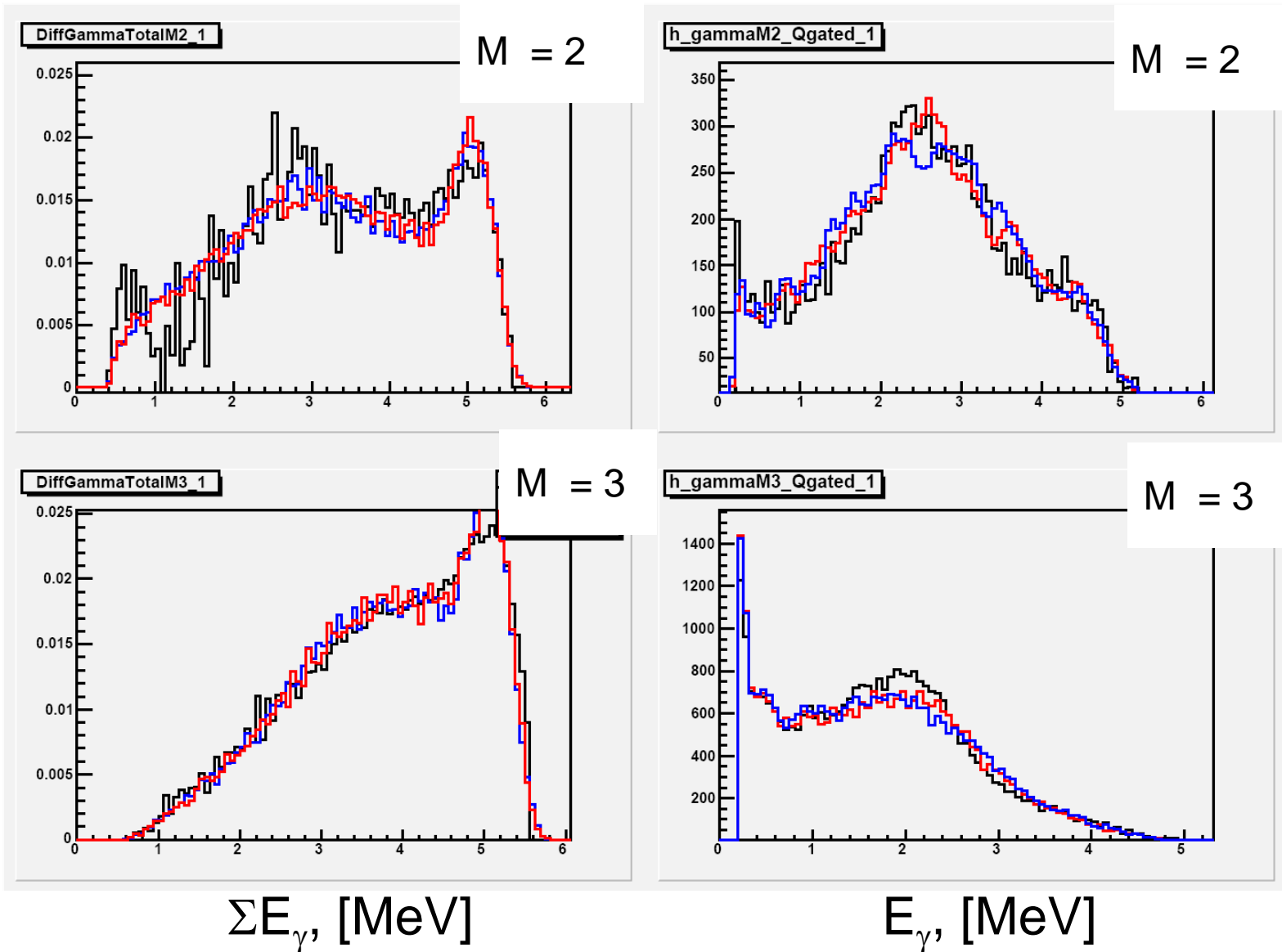
Which one is correct?

$J\pi$? Correlation with other channels?

So, we may be able learn something about the ^{235}U resonance decay by looking at the spectral shape.

How about other actinides? How do their spectral shapes look?

$^{241}\text{Am}(n,\gamma)$, 3^- resonance



Courtesy of M. Jandel, LANL

--- DANCE data, --- (red), --- (blue) simulations

Summary

Even for the well-studied nuclei such as ^{235}U many questions remain

Spectral shapes provide additional constraints for understanding of γ - ray cascade, therefore, improving the reaction codes (especially for calculation of n,γ reaction)

Spectral shapes are a useful (new) tool to study resonance spin and parity

After 70 years since the first neutron resonance was measured, a struggle is far from over!! But optimists try ...

Thanks to my collaborators:

J.A. Becker, W.E. Parker, C.Y. Wu,
Lawrence Livermore National Laboratory

T.A. Bredeweg, A. Couture, R.C. Haight, M. Jandel, J.M. O'Donnell,
R. Rundberg, J.M. Wouters, J.L. Ullmann, D.J. Vieira,
Los Alamos National Laboratory

G.E. Mitchell, B. Baramsai, R. Chankova, A. Chyzh, D. Dashdorj,
C. Walker,
North Carolina State University

F. Becvar, M. Krticka,
Charles University in Prague, Czech Republic

E. Sharapov,
Joint Institute of Nuclear Research, Dubna, Russia

E. Algin,
Eskisehir Osmangazi University, Turkey